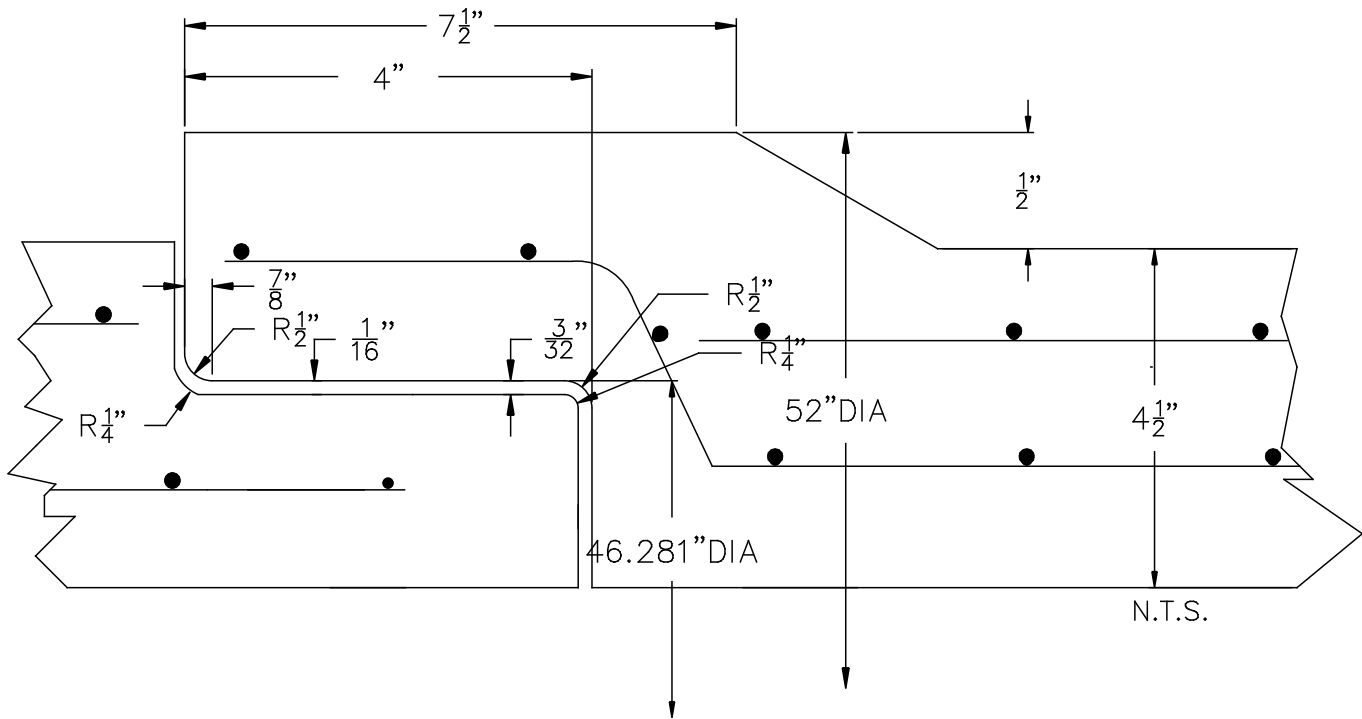


# 42" RCP MORTAR JOINT REINFORCED

## DESIGN NOTES:

1. MFG. IN ACCORDANCE WITH ASTM SPEC. C76 & AASHTO SPEC. M170, WALL B.
2. CEMENT TYPE II
3. CONCRETE STRENGTH CLASS III & IV 4,000psi CLASS V 6,000psi
4. CIRCUM. REINFORCEMENT:
  - CLASS III 0.21 SQ. IN. PER FT. INNER CAGE  
0.16 SQ. IN. PER FT. OUTER CAGE
  - CLASS IV 0.35 SQ. IN. PER FT. INNER CAGE  
0.26 SQ. IN. PER FT. OUTER CAGE
  - CLASS V 0.60 SQ. IN. PER FT. INNER CAGE  
0.45 SQ. IN. PER FT. OUTER CAGE
5. LAYING LENGTH 8'-0"



**NPCA**

Precast ... The Concrete Solution.



**SCITUATE  
COMPANIES**

SCITUATE CONCRETE PIPE  
P.O. BOX 870 \* 1 BUCKEYE LANE  
SCITUATE, MA 02066  
PHONE # 1-800-322-4488  
FAX # 781-545-6021

CONTRACTOR:

JOB NAME:

DATE:

APPROVED BY:

DRAWING BY: C.J. SCOTT

[WWW.SCITUATECOMPANIES.COM](http://WWW.SCITUATECOMPANIES.COM)