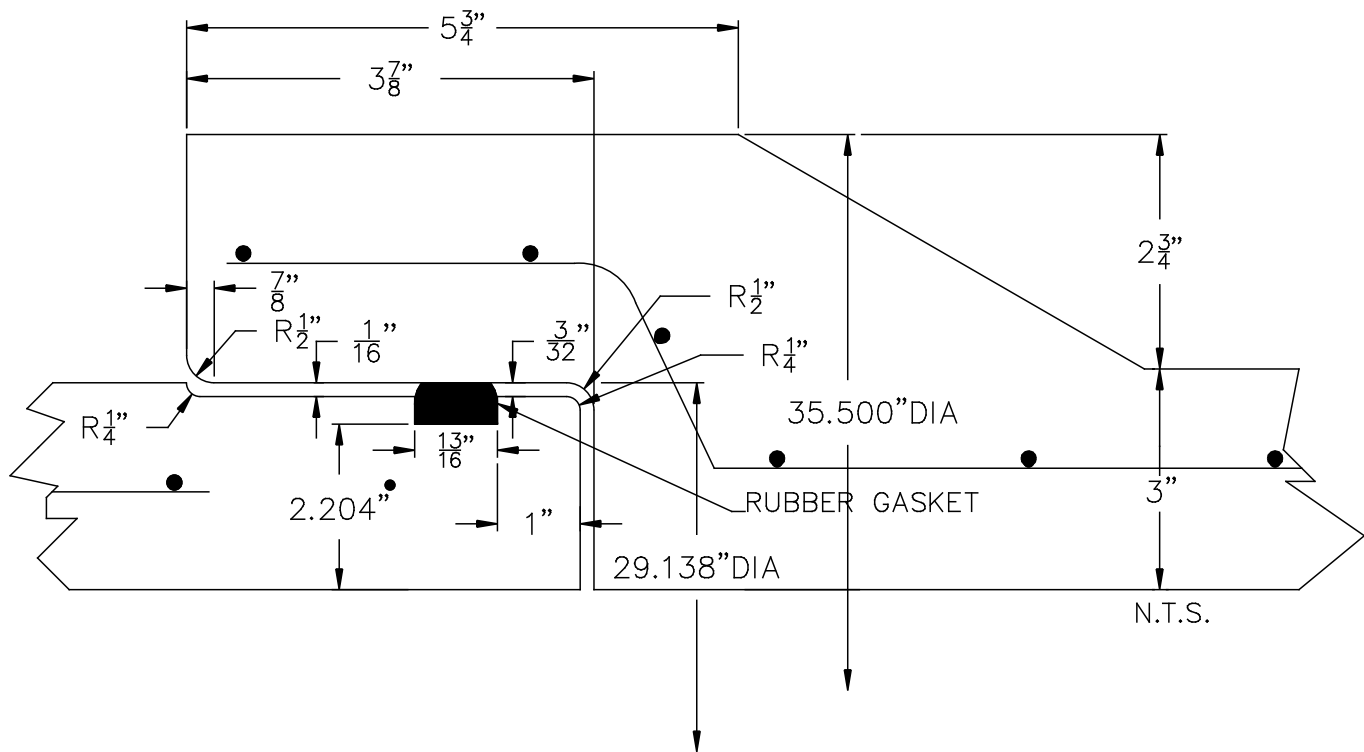


# 24" RCP O-RING JOINT REINFORCED

## DESIGN NOTES:

1. MFG. IN ACCORDANCE WITH ASTM SPEC. C76 & AASHTO SPEC. M170, WALL B.
2. CEMENT TYPE II
3. CONCRETE STRENGTH CLASS III & IV 4,000psi CLASS V 6,000psi
4. CIRCUM. REINFORCEMENT:  
 CLASS III 0.10 SQ. IN. PER FT.  
 CLASS IV 0.27 SQ. IN. PER FT.  
 CLASS V 0.30 SQ. IN. PER FT.
5. LAYING LENGTH 8'-0"
6. RUBBER GASKET ASTM SPEC. C443 & C361



**NPCC**

Precast ... The Concrete Solution.



**SCITUATE  
COMPANIES**

SCITUATE CONCRETE PIPE  
 P.O. BOX 870 \* 1 BUCKEYE LANE  
 SCITUATE, MA 02066  
 PHONE # 1-800-322-4488  
 FAX # 781-545-6021

CONTRACTOR:

JOB NAME:

DATE:

APPROVED BY:

DRAWING BY: C.J. SCOTT

[WWW.SCITUATECOMPANIES.COM](http://WWW.SCITUATECOMPANIES.COM)