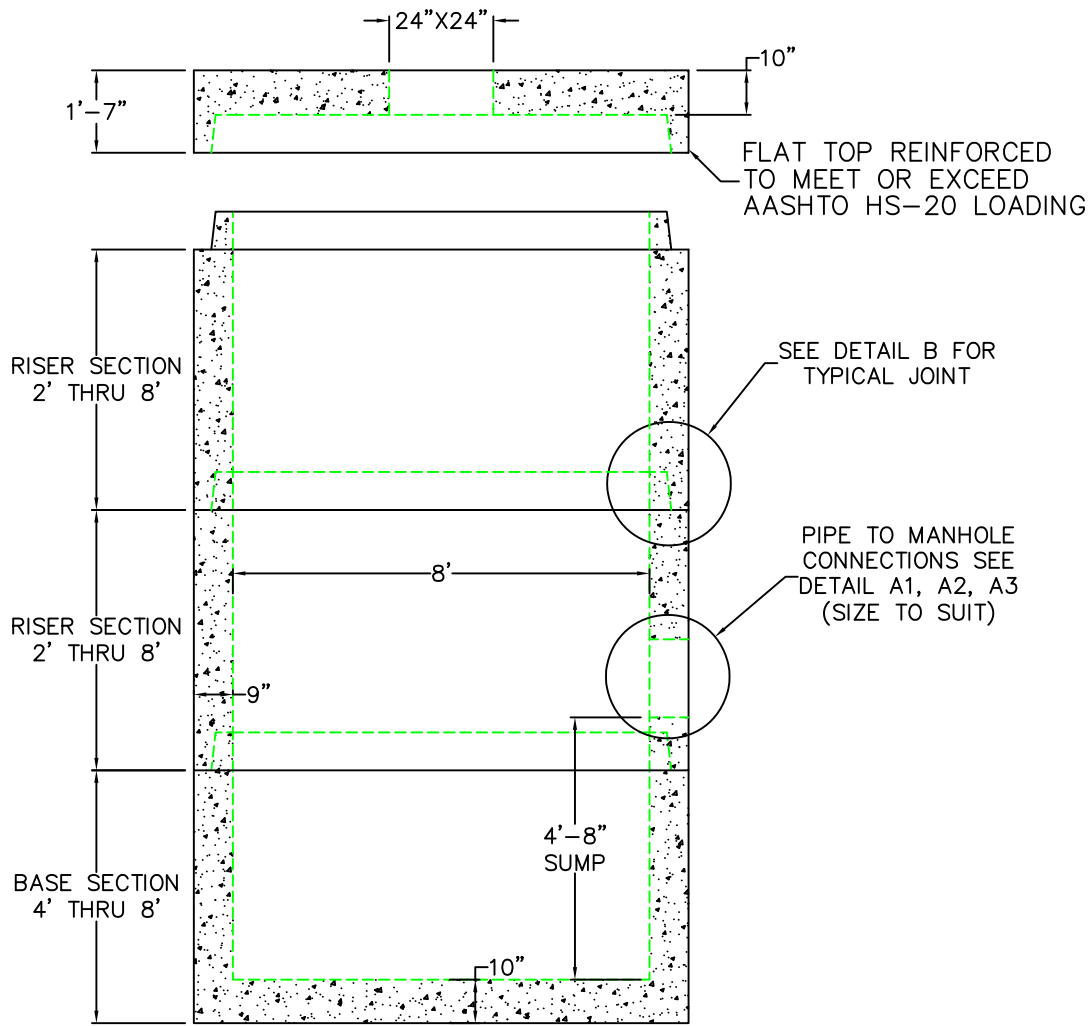


# 8' DIA CATCH BASIN



**A1**  
COMPRESSION GASKET (CAST IN)

**A2**  
FLEXIBLE SLEEVE

**A3**  
MORTAR BY CONTRACTOR

**B**  
BUTYL RUBBER SECTION JOINT

**C**  
POLYPROPYLENE MANHOLE STEPS

	FLOOR	VERT. FT	FLAT TOP
WEIGHT	3,800 lbs.	3,000 lbs.	4,800 lbs.
VOLUME		376 gal.	

**DESIGN NOTES:**

1. MANUFACTURED TO MEET OR EXCEED: ASTM C-478 & AASHTO M 199 SPECS.
2. CONCRETE = 4,000 PSI. MINIMUM CEMENT PER ASTM C-478 (6.1)
3. REINFORCED STEEL COMFORMS TO LATEST ASTM A 185 SPECIFICATIONS. 0.24 SQ. IN / LINEAL FT. AND 0.24 SQ. IN (BOTH WAYS) BASE BOTTOM
4. STEEL REINFORCEMENT TO MEET OR EXCEED AASHTO HS-20 LOADING
5. MANHOLE STEPS MEET LATEST OSHA REGULATION 29 CFR1910.27, SECTION 16 OF ASTM SPECIFICATION C478 AND SECTION 10 OF ASTM SPECIFICATION C497
6. BUTYL RUBBER JOINT SEALANT PER ASTM C-990 & ASHTO M-198
7. ONE POUR MONOLITHIC BASE



SCITUATE RAY PRECAST  
120 CLAY PIT ROAD  
MARSHFIELD, MA 02050  
PHONE # 1-800-440-0009  
FAX # 781-837-4320

CONTRACTOR:		JOB NAME:	
DATE:	DRAWING: SRP-DMH8	DRAWING BY: C.J. SCOTT	