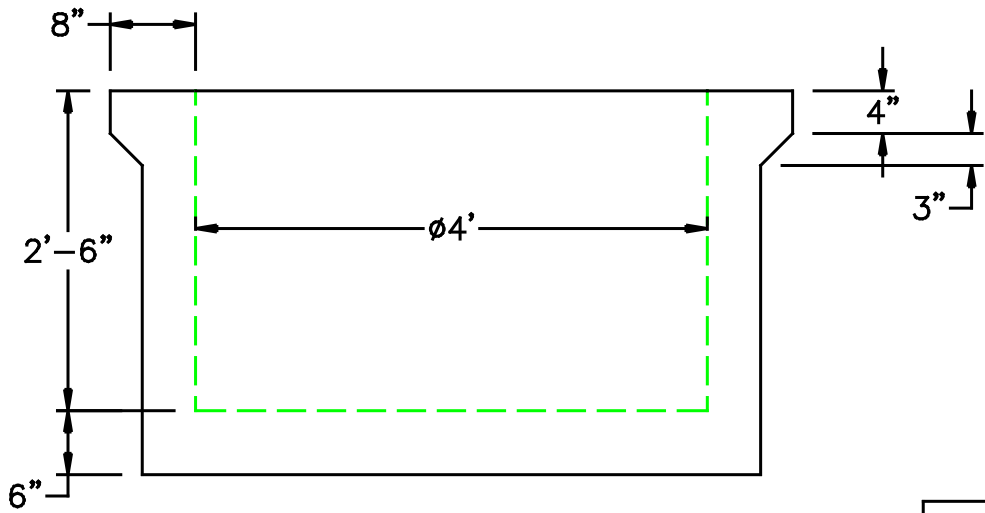
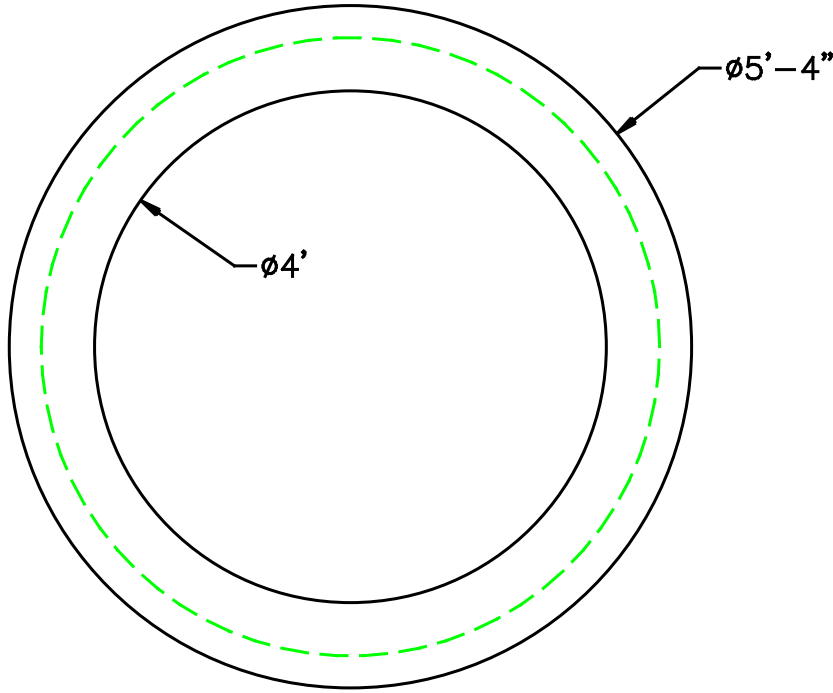


# 4' DIA RHODE ISLAND SUMP



	FLOOR	VERT. FT
WEIGHT	930 lbs.	875 lbs.
VOLUME		94 gal.

**DESIGN NOTES:**

1. MANUFACTURED TO MEET OR EXCEED: ASTM C-478 & AASHTO M 199 SPECS.
2. CONCRETE = 4,000 PSI. MINIMUM CEMENT PER ASTM C-478 (6.1)
3. REINFORCED STEEL CONFORMS TO LATEST ASTM A 185 SPECIFICATIONS. 0.12 SQ. IN / LINEAL FT. AND 0.12 SQ. IN (BOTH WAYS) BASE BOTTOM
4. STEEL REINFORCEMENT TO MEET OR EXCEED AASHTO HS-20 LOADING

A1	COMPRESSION GASKET (CAST IN)	
A2	FLEXIBLE SLEEVE	
A3	MORTAR BY CONTRACTOR	
B	BUTYL RUBBER SECTION JOINT	
C	POLYPROPYLENE MANHOLE STEPS	



SCITUATE RAY PRECAST  
120 CLAY PIT ROAD  
MARSHFIELD, MA 02050  
PHONE # 1-800-440-0009  
FAX # 781-837-4320

CONTRACTOR:		JOB NAME:	
DATE:	DRAWING: SRP-DFT4	DRAWING BY: C.J. SCOTT	

[WWW.SCITUATECOMPANIES.COM](http://WWW.SCITUATECOMPANIES.COM)