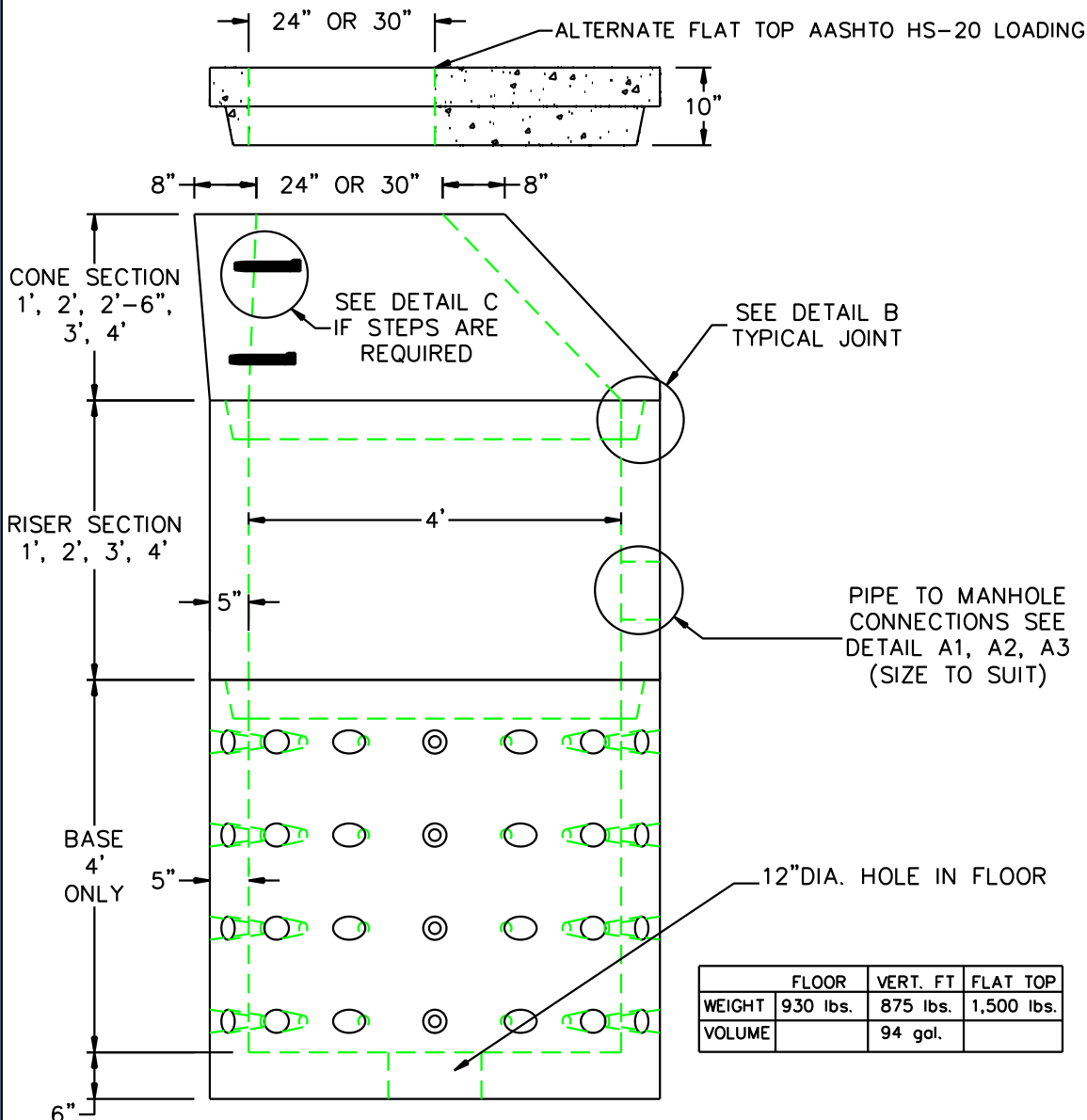
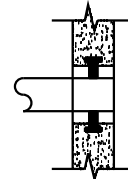


4' DIA LEACHING MANHOLE

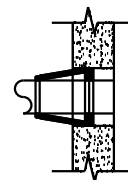


	FLOOR	VERT. FT	FLAT TOP
WEIGHT	930 lbs.	875 lbs.	1,500 lbs.
VOLUME		94 gal.	

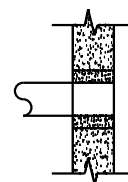
A1
COMPRESSION
GASKET (CAST IN)



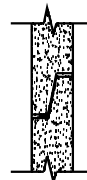
A2
FLEXIBLE
SLEEVE



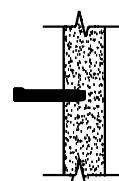
A3
MORTAR BY
CONTRACTOR



B
BUTYL RUBBER
SECTION JOINT



C
POLYPROPYLENE
MANHOLE STEPS



DESIGN NOTES:

1. MANUFACTURED TO MEET OR EXCEED: ASTM C-478 & AASHTO M 199 SPECS.
2. CONCRETE = 4,000 PSI. MINIMUM CEMENT PER ASTM C-478 (6.1)
3. REINFORCED STEEL COMFORMS TO LATEST ASTM A 185 SPECIFICATIONS.
0.12 SQ. IN / LINEAL FT. AND 0.12 SQ. IN (BOTH WAYS) BASE BOTTOM
4. STEEL REINFORCEMENT TO MEET OR EXCEED AASHTO HS-20 LOADING
5. MANHOLE STEPS MEET LATEST OSHA REGULATION 29 CFR1910.27, SECTION 16
OF ASTM SPECIFICATION C478 AND SECTION 10 OF ASTM SPECIFICATION C497
6. BUTYL RUBBER JOINT SEALANT PER ASTM C-990 & ASHTO M-198



NPCA

Precast ... The Concrete Solution.



**SCITUATE
COMPANIES**

SCITUATE RAY PRECAST
120 CLAY PIT ROAD
MARSHFIELD, MA 02050
PHONE # 1-800-440-0009
FAX # 781-837-4320

CONTRACTOR:

JOB NAME:

DATE:

DRAWING: SRP-LDMH4

DRAWING BY: C.J. SCOTT

WWW.SCITUATECOMPANIES.COM